

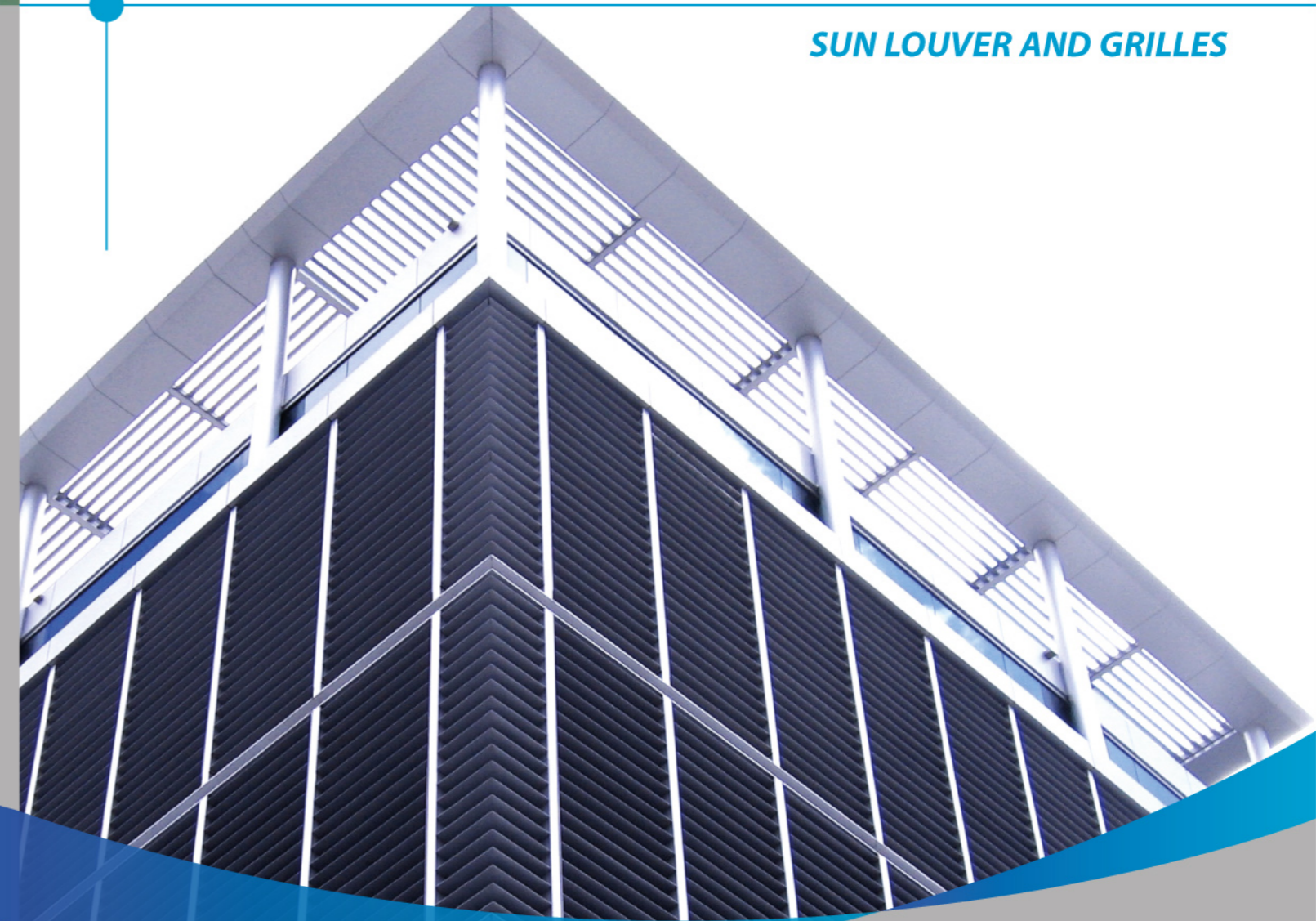


THE ART OF
FACADE
REFLECTING
YOUR
VISION

**METAL PRODUCTS
FOR ARCHITECTURAL**

- Metal Ceilings
- Sun Louver & Grilles
- Facade
- Aluminium Composite
- Tension Membrane
- Coil Coating

SUN LOUVER AND GRILLES



72/17 M. 3 Teparak rd.
Bangpleeyai Bangplee
Samutprakarn 10540
Tel: +66 (0) 2755 3641-5
Fax: +66 (0) 2755 3664
info@fameline.com
www.fameline.com



**ARCHITECTURAL
METAL PRODUCTS**



SUN LOUVERS

Fameline Products Company Limited, Louver System is a highly Functional, yet architecturally pleasing system that can add color and exciting design effects to a building façade. The system is available with slats or panel set at a range of angles and in a wide range of colors and size. Also, the Fameline Products Company Limited, sun Louver System provides for a flexibility in design, easy maintenance, and speed of installation.

AEROFOIL SOLAR SHADING SYSTEMS

PRODUCT DESCRIPTION

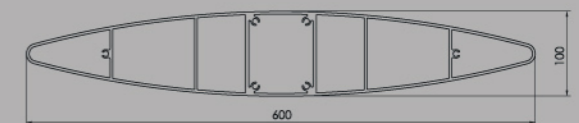
Fameline Group Aerofoil Solar Shading System is the latest advanced technology aiming to serve energy saving - oriented and heat reduction-oriented buildings with modern and unique appearance. The system is available in 2 options, Fixed System and Automatic Adjustable System of which the louver blades are automatically moved and driven by Linear Actuator from in-house control. All blades are made of extruded aluminium profile and coated with superior paint at your choice of either Liquid Baked Enamel or Powder Coating at high temperature to resist color change and fadedness and ensure the durability.

SPECIAL FEATURES

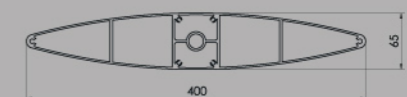
- Modernized appearance.
- Energy savings and heat reduction by in-house control.
- Easy installation.
- Superior quality with climate resistance.
- Less maintenance and cleanliness.

AEROFOIL

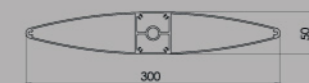
AF600



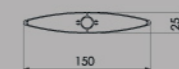
AF400



AF300



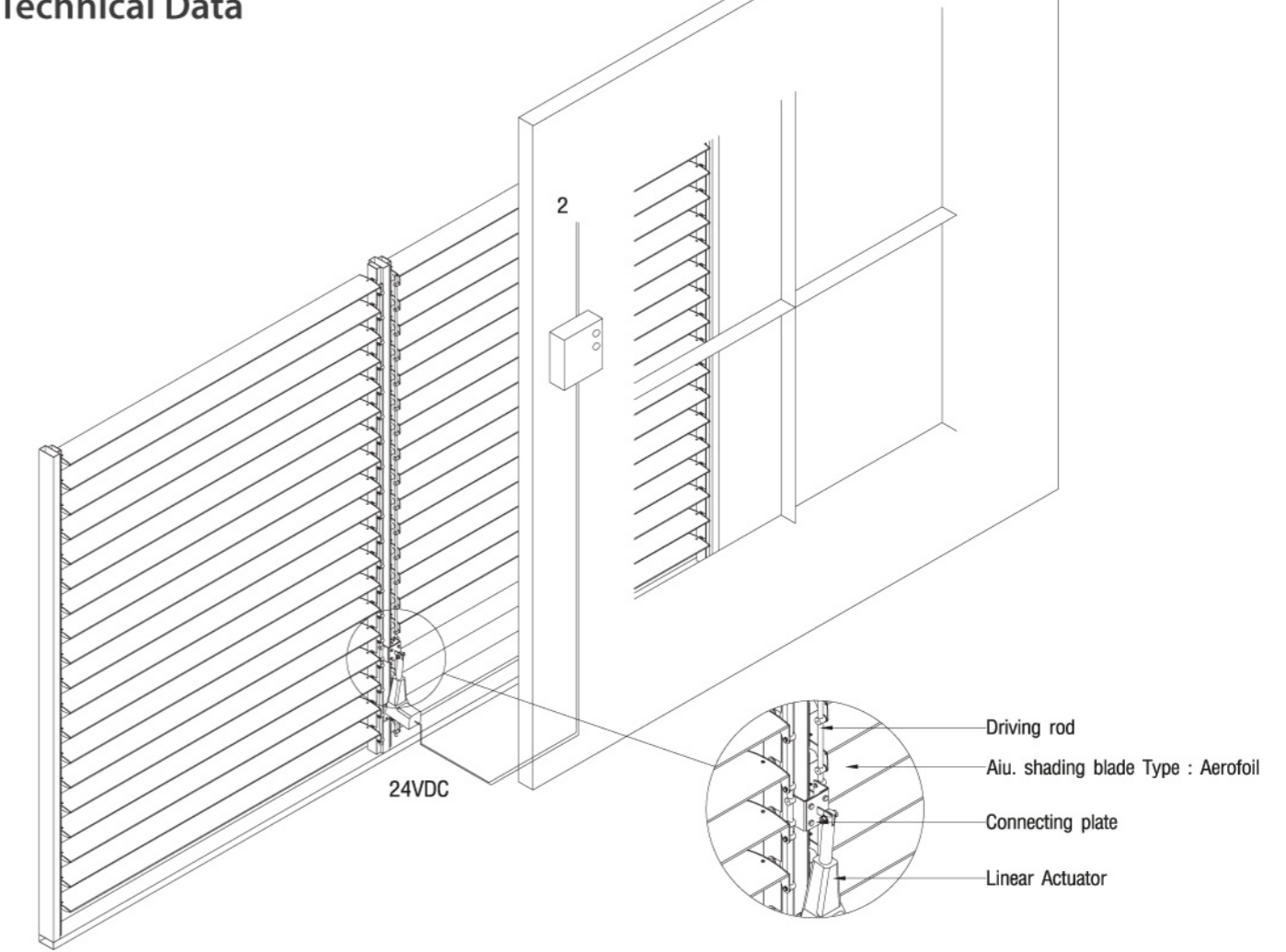
AF150





VERTICAL ADJUSTABLE SHADING SYSTEM

Technical Data



VERTICAL ADJUSTABLE SHADING SYSTEM

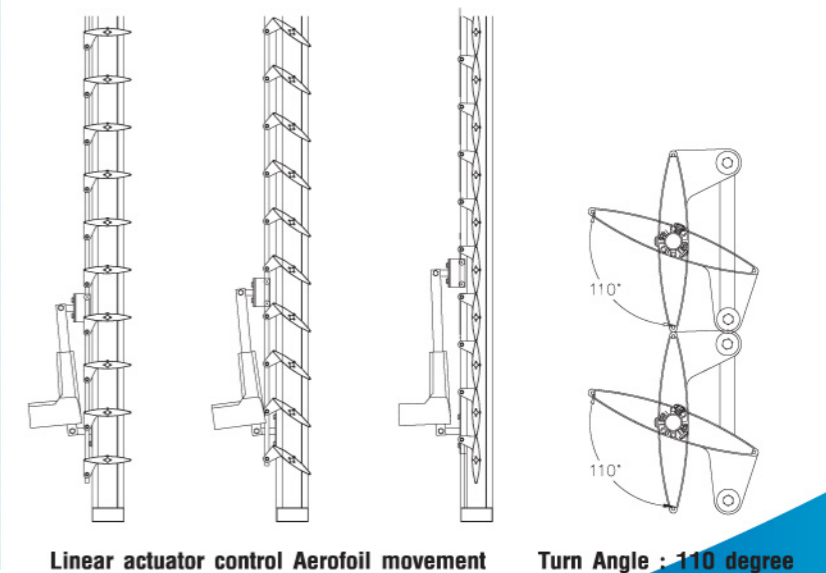
FameLine Adjustable Vertical Shading System is specially designed to control sunlight exposure into buildings with movable louver blades driven by Linear Actuator from in-house control. The controller is available at your choice of either manual or automatic system. The latter system is equipped with Micro Controller whose Sensor measures light intensity (lux) in the room and the blades will adjust more or less as programmed by user. All blades are made of extruded aluminium profile and coated with superior paint at your choice of either Liquid Baked Enamel or Powder Coating at high temperature to resist color change or fadedness and ensure the durability.

Material Specification

item	part name	material
1	Shading Blade	Aluminium extrusion / 1.6 mm. thk.
2	Frame	Aluminium sheet / 2 mm. thk.
3	Bush and pin	Stainless steel 304
4	Driving rod	Aluminium extrusion / Dia. 1/2"
5	End cap	Aluminium sheet / 3.0 mm. thk.

Linear Actuator Specification

Max load	Speed
Max load : 2000N, 24VDC	Speed : 10-13mm/sec.



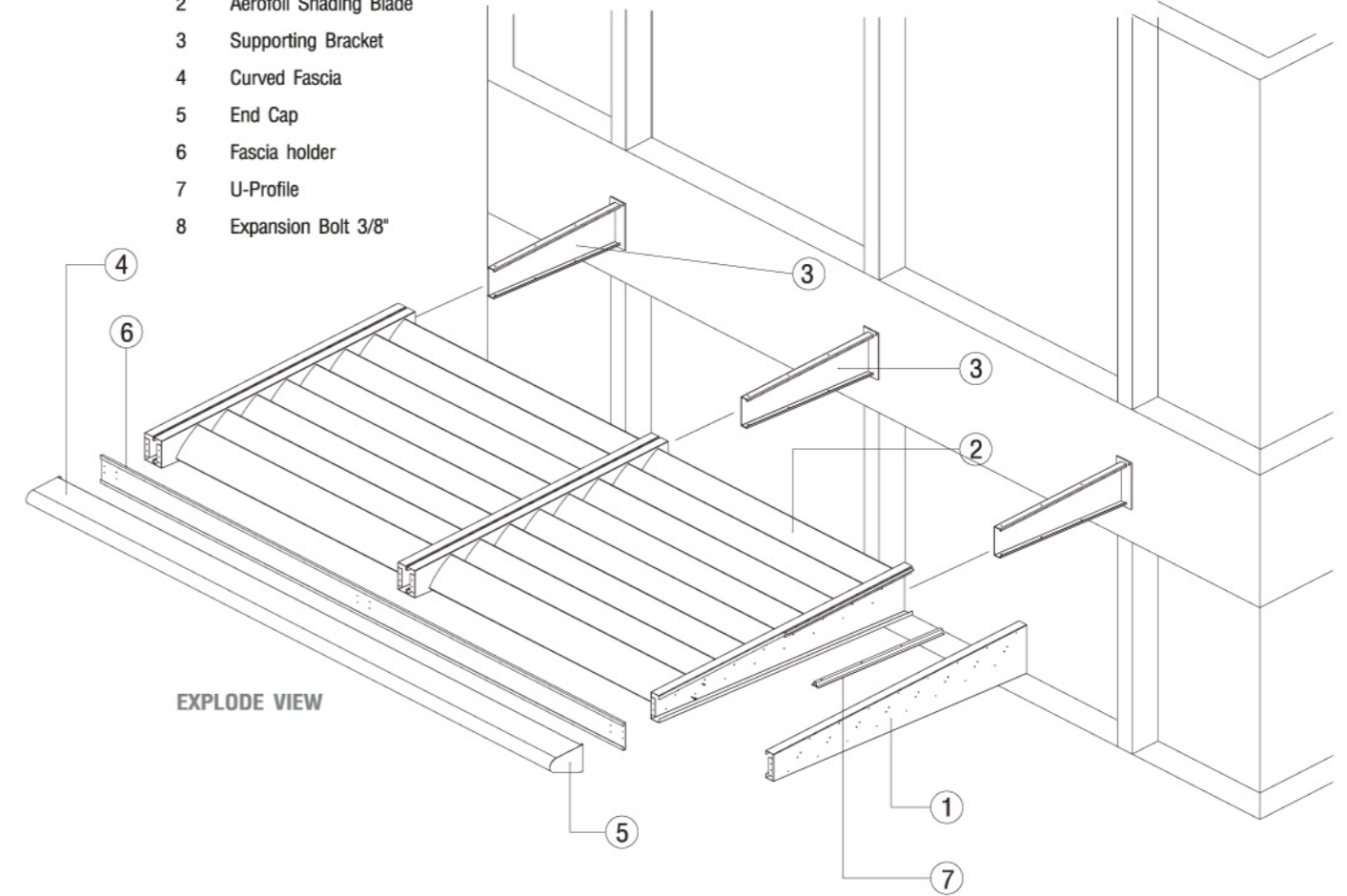
Linear actuator control Aerofoil movement Turn Angle : 110 degree



HORIZONTAL OVERHANG SHADING SYSTEM

Technical Data

- No. Parts Name
- 1 Cantelevered Beam
- 2 Aerofoil Shading Blade
- 3 Supporting Bracket
- 4 Curved Fascia
- 5 End Cap
- 6 Fascia holder
- 7 U-Profile
- 8 Expansion Bolt 3/8"

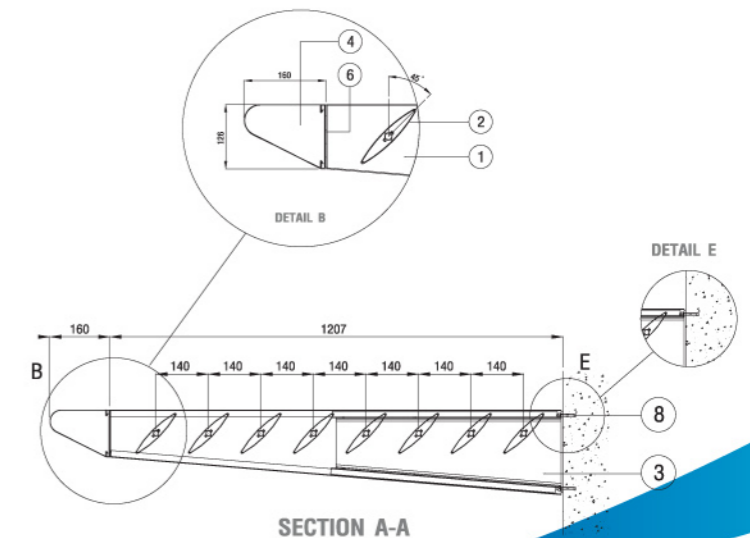


HORIZONTAL OVERHANG SHADING SYSTEM

FameLine Horizontal Shading System is specially designed for buildings with less sunlight. With the installation in open area or above window level allows the system to protect sunlight and expose clear view to eyesight. The louver blades are made of extruded aluminium profile with the maximum span of 2 meters and coated with superior paint at your choice of either Liquid Baked Enamel or Powder Coating at high temperature to resist color change or fadedness and ensure the durability.

Material Specification

item	part name	material
1	Cantelevered Beam	Aluminium sheet / 1.5 mm. thk.
2	Shading Blade	Aluminium extrusion / 1.6 mm. thk.
3	Supporting Bracket	Galvanized steel / 3.0 mm. thk.
4	Fascia	Aluminium sheet / 1.2 mm. thk.
5	End cap	Aluminium sheet / 1.5 mm. thk.
6	Fascia Holder	Aluminium sheet / 1.5 mm. thk.
7	U-profile	Aluminium sheet / 2.0 mm. thk.
8	Expansion bolt	Galvanized steel / Dia. 3/8"





CUSTOM-DESIGN SUN LOUVER

Custom Design Sun Louver : By working as partnership with clients and architects, FameLine can provide practical solutions to meet specific performance, aesthetic and budget criteria.

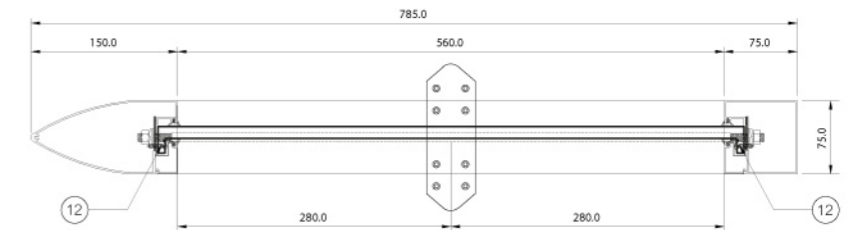
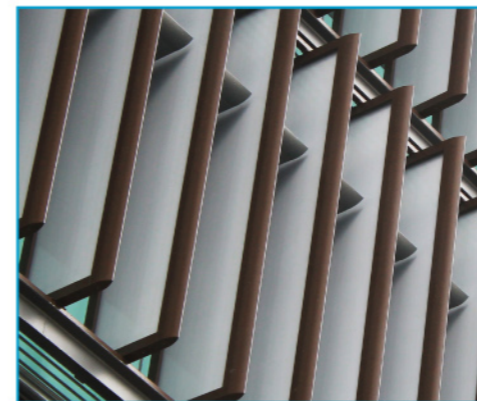
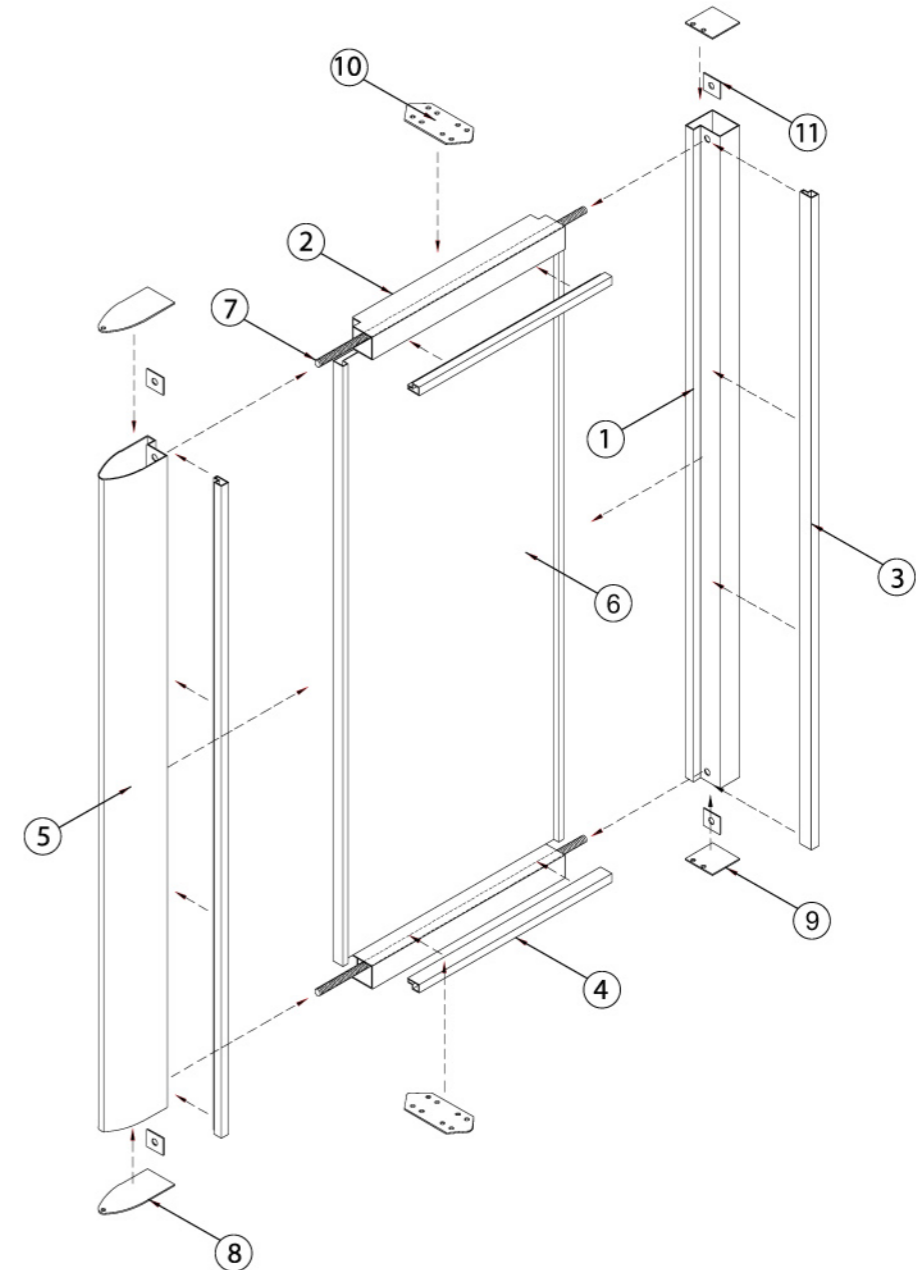
High Quality Standard : Our Design, manufacturing, and installation are strictly controlled under ISO9001.

	DESCRIPTION		DESCRIPTION
1	Alu.Frame L=3418 mm.	7	Stud $\frac{3}{8}$ " L=645 mm.
2	Alu.Frame L=600 mm.	8	Alu.End Cap
3	Alu.Frame L=3313 mm.	9	Alu.End Cap
4	Alu.Frame L=560 mm.	10	Alu.End Cap
5	Alu.Frame L=3418 mm.	11	Alu.Plates
6	Alu.Frame L=3418 mm.	12	Screw NO.8x $\frac{3}{4}$ " (F)(SUS)

CUSTOM-DESIGN SUN LOUVER

Technical Data

No.	Parts Name
1	Alu.Frame L=3418 mm.
2	Alu.Frame L=600 mm.
3	Alu.Frame L=3313 mm.
4	Alu.Frame L=560 mm.
5	Alu.Frame L=3418 mm.
6	Alu.Frame L=3418 mm.
7	Stud $\frac{3}{8}$ " L=645 mm.
8	Alu.End Cap
9	Alu.End Cap
10	Alu.End Cap
11	Alu.Plates
12	Screw NO.8x $\frac{3}{4}$ "(F)(SUS)





ALUMINIUM GRILLES

Fameline Aluminium Grilles is one of the most popular design for façade works. Its elegant look and sun screen function are the two benefits that make designers always choose.

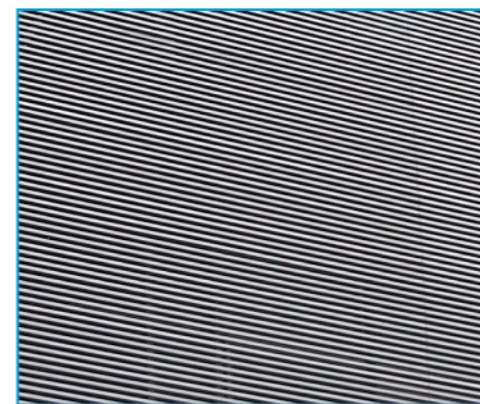
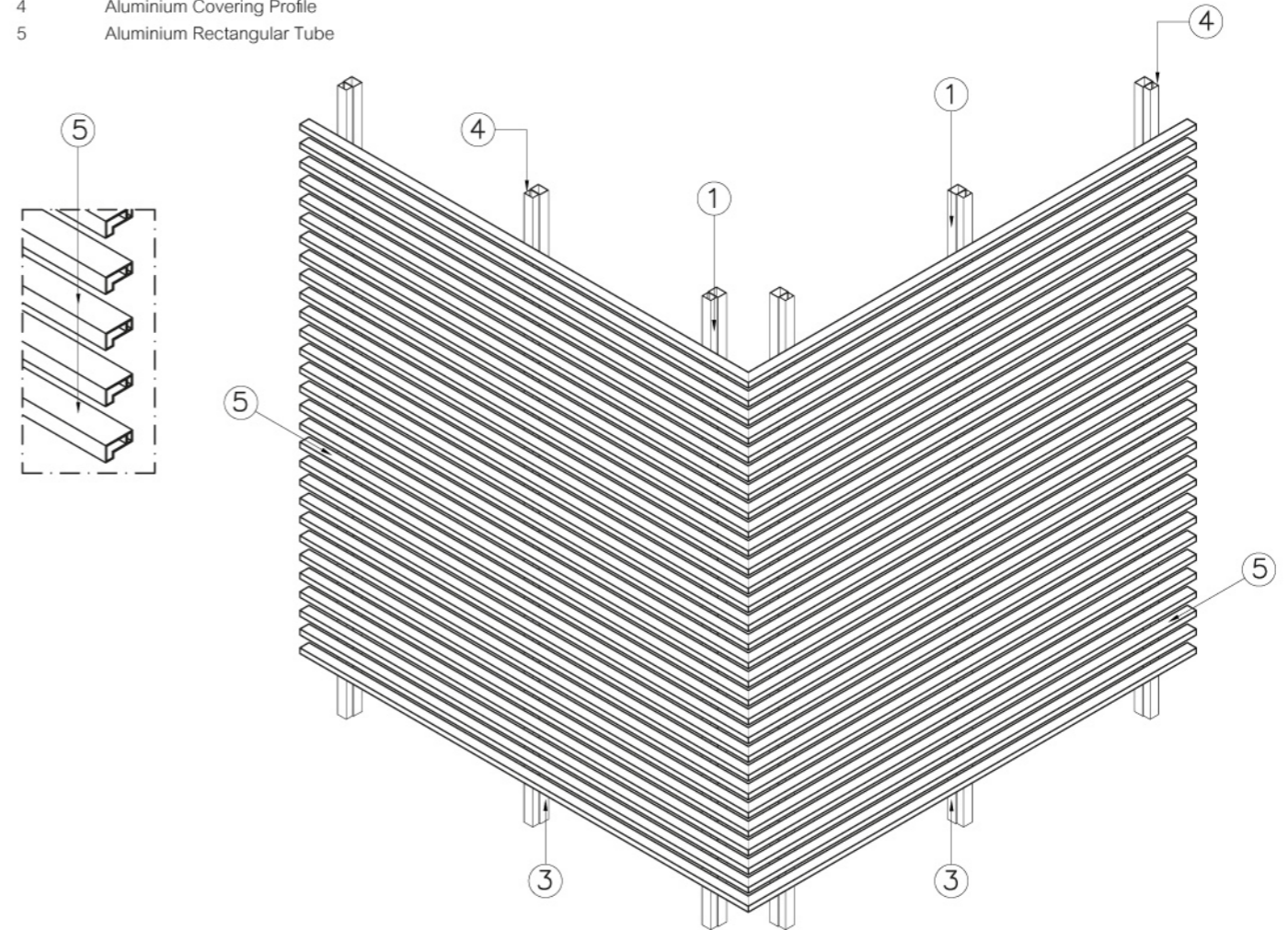
Material Specifications

Item	Part Name	Material
1	Aluminium Grille	Aluminium Alloy 6063, 1.2 mm. THK w/ Electrostatic Powder coat or Acrylic Stoved Enamel
2	Frame	2.0 mm. THK, aluminium or 1.5 mm. THK, galvanized steel profile
3	Screw	Stainless Steel 304

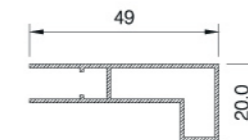
2050RT 2050AT

Technical Data

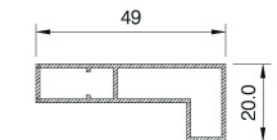
- No. Parts Name
- 1 Aluminium Supporting Frame
- 2 Self Drilling Screw
- 3 Steel-Box
- 4 Aluminium Covering Profile
- 5 Aluminium Rectangular Tube



2050RT



2050AT

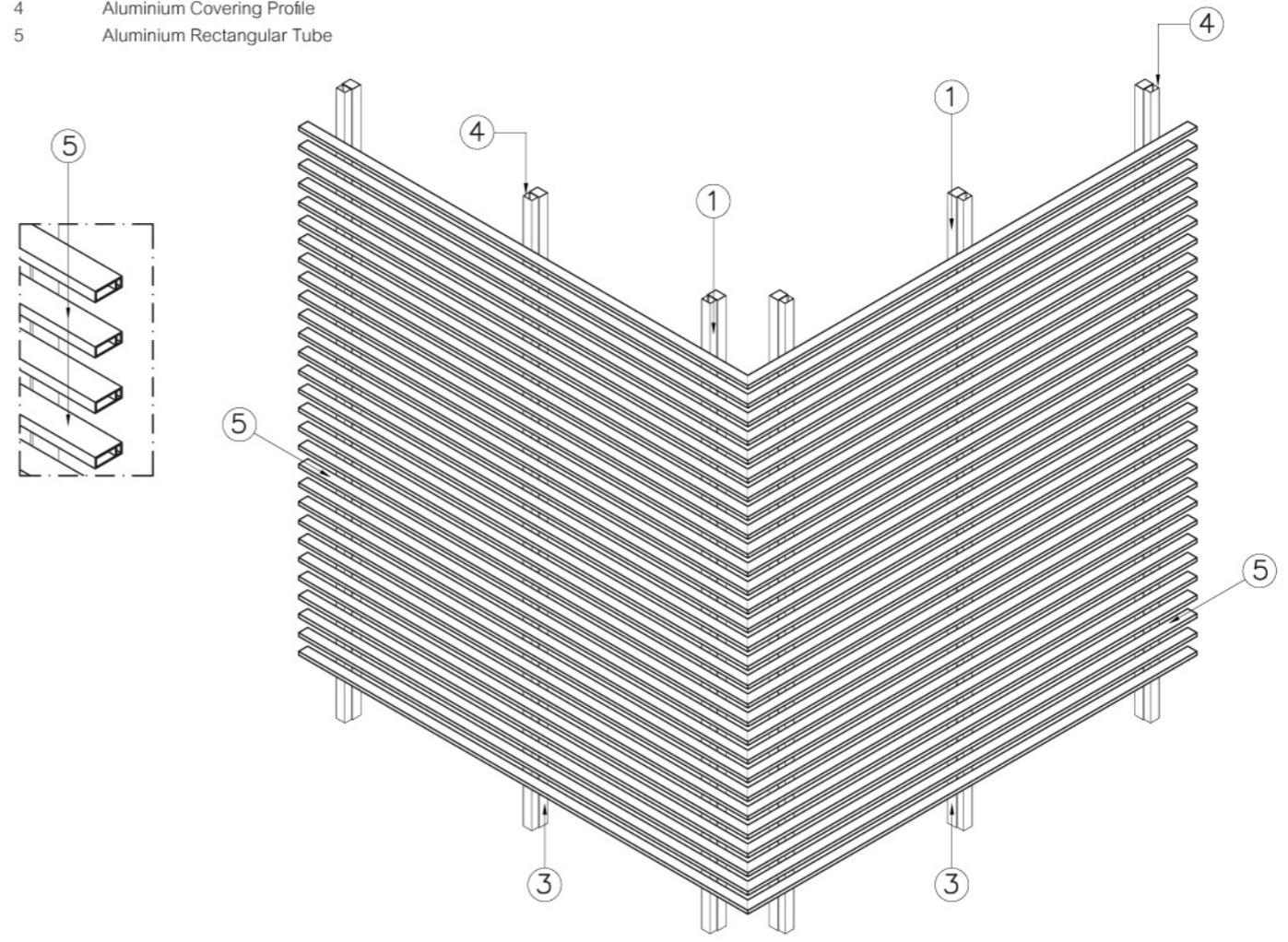




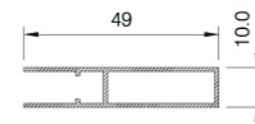
1050RT 1050AT

Technical Data

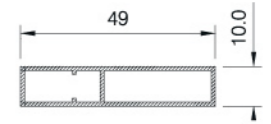
- No. Parts Name
- 1 Aluminium Supporting Frame
- 2 Self Drilling Screw
- 3 Steel-Box
- 4 Aluminium Covering Profile
- 5 Aluminium Rectangular Tube



1050RT



1050AT



ALUMINIUM GRILLES

Fameline Aluminium Grilles is one of the most popular design for façade works. Its elegant look and sun screen function are the two benefits that make designers always choose.

Material Specifications

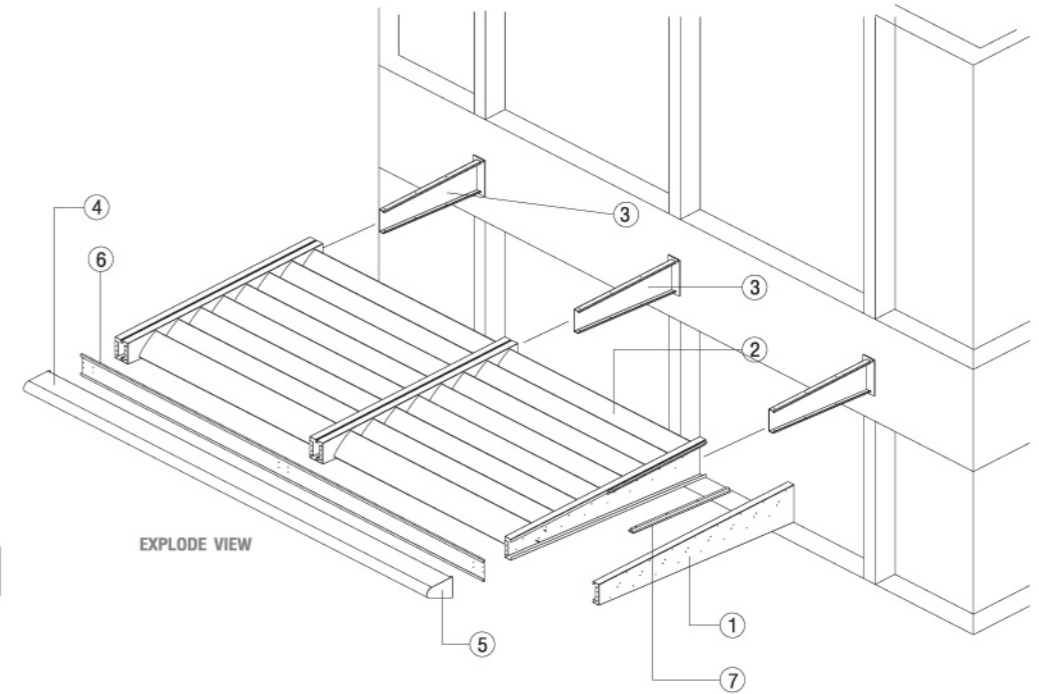
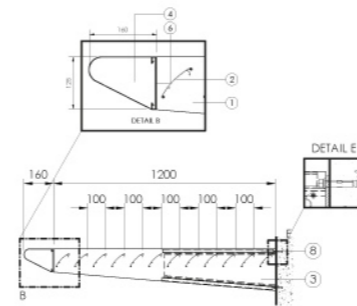
Item	Part Name	Material
1	Aluminium Grille	Aluminium Alloy 6063, 1.2 mm. THK w/ Electrostatic Powder coat or Acrylic Stoved Enamel
2	Frame	2.0 mm. THK, aluminium or 1.5 mm. THK, galvanized steel profile
3	Screw	Stainless Steel 304



150CS 100CS

OVERHANG Technical Data

- No. Parts Name
- 1 Cantelevered Beam
- 2 Aerofoil Shading Blade
- 3 Supporting Bracket
- 4 Curved Fascia
- 5 End Cap
- 6 Fascia holder
- 7 U-Profile
- 8 Expansion Bolt 3/8"

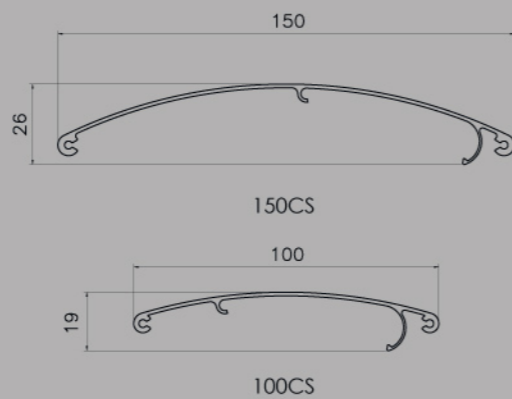


ALUMINIUM SUN LOUVERS "CS" SERIES

Aluminium louvers "Z" series is one of the most popular louvers design for office building, factories and residential buildings. The "Z" louver system composed of roll formed aluminium profile fixed with galvanized or aluminium fixing components. The "Z" systems are available in various sizes and designs.

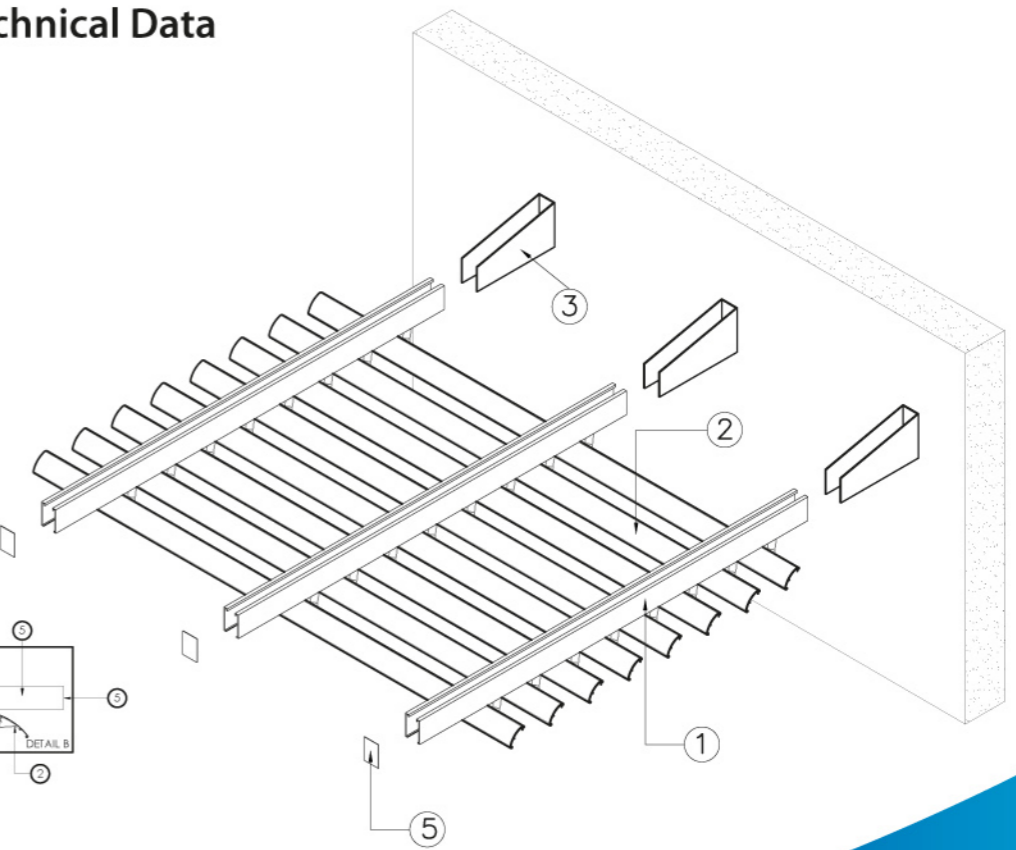
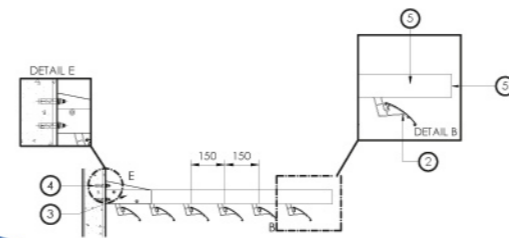
Material Specifications

Item	Part Name	Material
1	Shading Blade	Aluminium 6063/1.6 mm. THK w/Electrostatic Powder coat or Acrylic Stoved Enamel
2	Frame	Aluminium 6063
3	Clip	Aluminium 6063



RAFTER Technical Data

- No. Parts Name
- 1 Aluminum Rafter
- 2 Aluminum Blade
- 3 Steel-U Support
- 4 Expansion Bolt 3/8"
- 5 End Cap



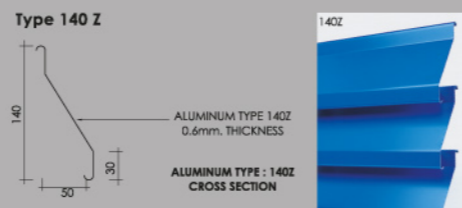
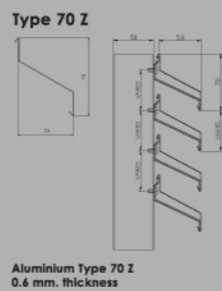


ALUMINIUM SUN LOUVERS "Z" SERIES

Aluminium louvers "Z" series is one of the most popular louvers design for office building, factories and residential buildings. The "Z" louver system composed of roll formed aluminium profile fixed with galvanized or aluminium fixing components. The "Z" systems are available in various sizes and designs.

Material Specifications

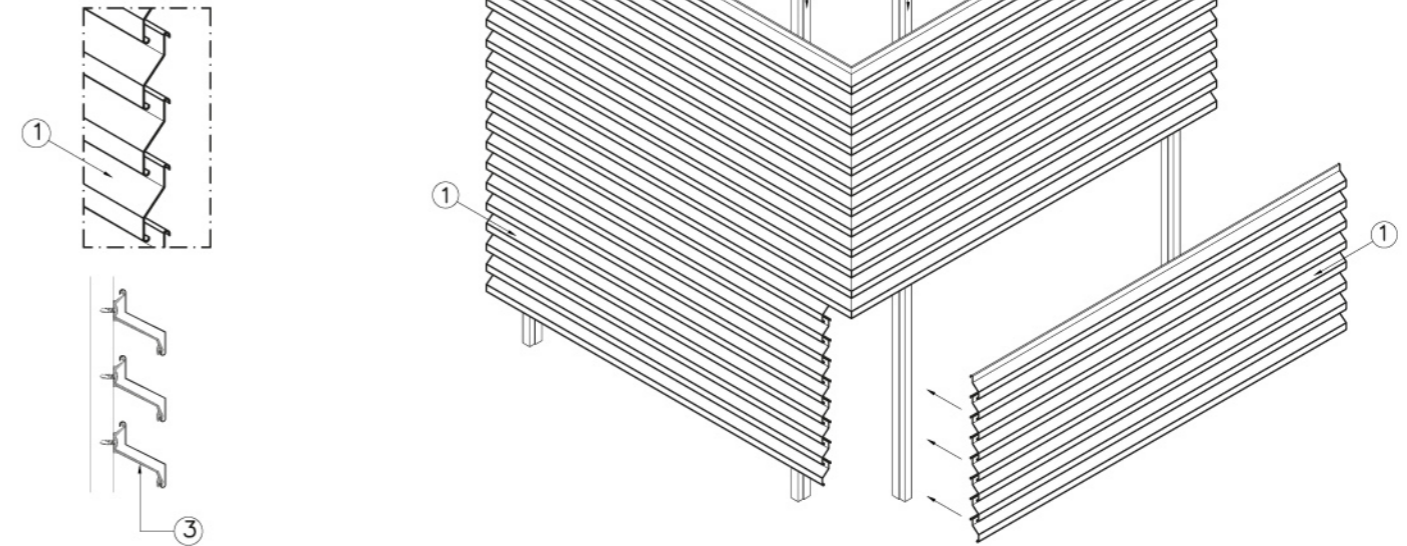
Item	Part Name	Material
1	Shading Blade	Aluminium Alloy 3105 H14 w/ Electrostatic Powder coat or Acrylic Stoved Enamel
2	Frame	Aluminium alloy 3105 H14 or Galvanized Steel



"Z" SERIES 70Z 140Z

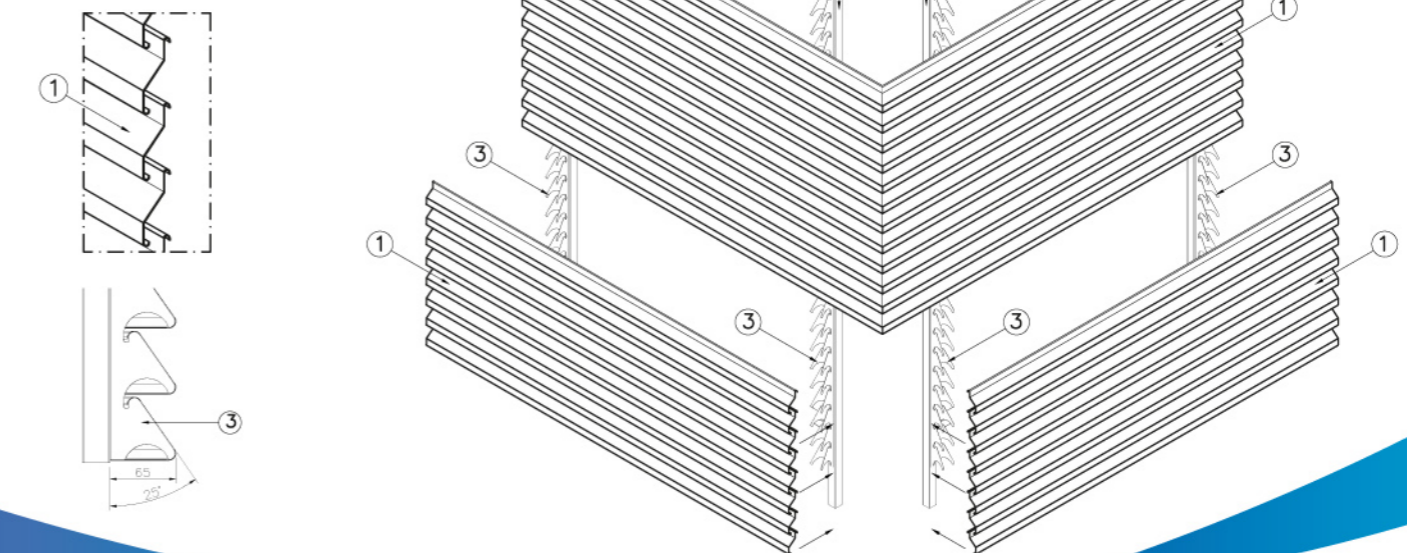
Technical Data 70Z

- No. Parts Name
- 1 Aluminium Sun Louver 70Z
- 2 Steel-Box
- 3 Painted Aluminium Blade Holder
- 4 Self Drilling Screw



Technical Data 140Z

- No. Parts Name
- 1 Aluminium Sun Louver 70Z
- 2 Steel-Box
- 3 Painted Aluminium Blade Holder
- 4 Self Drilling Screw



85C SL SYSTEM

The FameLine Sun Louver System is a vertical wall sun shading system. The system uses "C" profile slats or panels that snap into vertically mounted frames. The frames can be mounted on the exterior of a building over window openings, along balconies, or over open area on a building elevation.

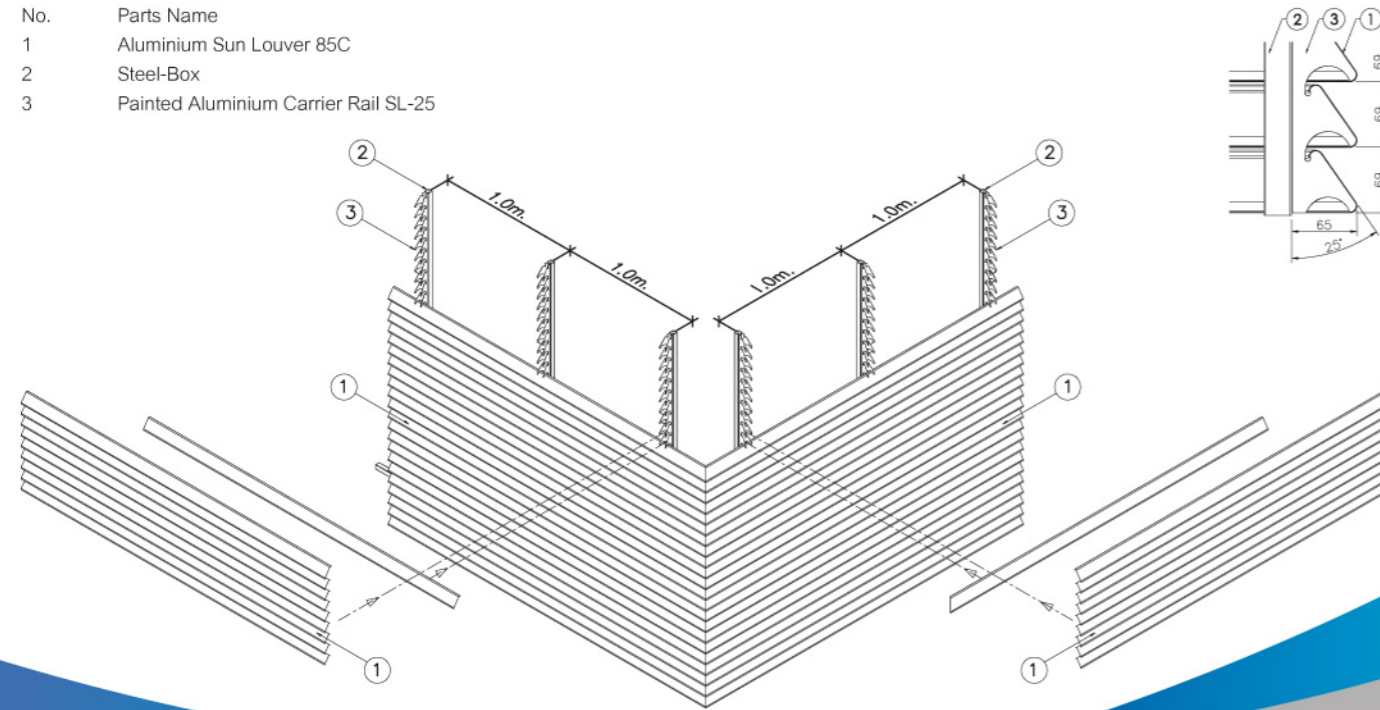
For 85C/SL system, the vertical frame are offered in three different designs that hold the slats or panels at different angles of 25,35 and 45 degrees. The range of angles provide for a variety of a desired conditions related to air-flow, sun-shading or rainfall requirements, and desired visibility.

Specifications

Louver Panel	
MATERIAL	ALUMINUM ALLOY 3105 H1 6
COATING	BAKED ENAMEL PAINT
LENGTH	85 mm. WIDTH, 15 mm. DEPTH, 0.6 mm. THK.
Carriers SL-25,35,45	
MATERIAL	ALUMINUM ALLOY 3105 H1 4 (0.9 mm. THK)
LENGTH	2.40 m.
COATING	BAKED ENAMEL PAINT

Technical Data

- No. Parts Name
- 1 Aluminium Sun Louver 85C
- 2 Steel-Box
- 3 Painted Aluminium Carrier Rail SL-25



Custom-Designed Louver & Grilles

In addition to FameLine standard Sun Louver & Grilles products, we provide optimally-designed solutions to meet specific performance, aesthetic and budget criteria depending on each individual client's Sun Louver & Grilles requirement.